

MANCHESTER REGIONAL HOSPITAL BOARD

---

BLACKPOOL AND FYLDE HOSPITAL MANAGEMENT  
COMMITTEE, VICTORIA HOSPITAL, BLACKPOOL

OPENING  
of  
NEW OPERATING THEATRE  
and  
CENTRAL STERILE SUPPLY  
DEPARTMENT

at  
VICTORIA HOSPITAL, BLACKPOOL

by  
SIR JAMES LYTHGOE, C.B.E., M.A.  
CHAIRMAN, MANCHESTER REGIONAL HOSPITAL BOARD

on  
FRIDAY, 29th JANUARY, 1965  
at 3 p.m.

*PROGRAMME AND BROCHURE*



A bird's eye view of part of Victoria Hospital

MANCHESTER REGIONAL HOSPITAL BOARD

Chairman: Sir JAMES LYTHGOE, C.B.E., M.A.

Alderman Mrs. N. BEER, O.B.E., J.P.  
E. BISHOP, Esq., O.B.E., D.M.A.  
T. M. BROADIE-GRIFFITH, Esq., LL.B.  
Councillor W. P. DOBSON, C.C., A.C.I.S., A.I.C.A.  
J. E. DRIVER, Esq., M.B.E., T.D., LL.M.  
S. C. GAWNE, Esq., M.D., M.R.C.S., L.R.C.P., D.P.H., D.C.H.  
F. GIBSON, Esq.  
L. W. GIBSON, Esq., F.C.A.  
Alderman T. G. HARRISON, J.P., C.C.  
Alderman G. D. HASTWELL, O.B.E., J.P.  
T. S. HESLOP, Esq., F.R.C.S.  
Alderman T. HOURIGAN, J.P., M.A., C.A.  
G. H. KENYON, Esq.  
J. KILPATRICK, Esq., J.P.  
Professor R. E. LANE, C.B.E., M.D., F.R.C.P.  
Miss N. LIVESY, S.R.N., S.C.M.  
R. W. LUXTON, Esq., B.Sc., M.D., F.R.C.P.  
Professor W. I. C. MORRIS, F.R.C.S. (Ed.), F.R.C.O.G.  
Alderman W. ONIONS, M.B.E., J.P., M.A.  
Councillor H. PIGOTT, M.B., Ch.B.  
G. C. SIMON, Esq., M.A.  
S. SMITH, Esq., M.D., M.R.C.P., D.P.M.  
Mrs. M. M. STEPHENS, M.B.E.  
C. C. STEVENS, Esq., LL.B.  
B. SWINDELL, Esq., J.P.  
E. K. WILLING-DENTON, Esq., M.A., B.Litt. (Oxon.)

Senior Administrative Medical Officer:

F. N. MARSHALL, Esq., M.D., B.Sc., D.P.H.

Secretary:

J. GIBBON, Esq., F.H.A.

BLACKPOOL AND FYLDE HOSPITAL MANAGEMENT COMMITTEE

Chairman: E. BISHOP, Esq., O.B.E., D.M.A.

Councillor O. AIKEN, J.P.

Mrs. A. CROOK

J. J. DEVLIN, Esq., L.R.C.P.I. & L.M., L.R.C.S.I. & L.M.

J. FORD, Esq.

County Councillor ERIC FRY.

A. V. GIBSON, Esq.

J. H. HESSEY, Esq., J.P.

Councillor Mrs. E. M. HOPE

D. K. LENNOX, Esq., M.B., Ch.B., F.R.C.S.

C. H. MACKETH, Esq., F.R.I.B.A., F.R.I.C.S., F.R.S.I.

Mrs. M. E. NEWSOM, M.B.E.

Sir C. HERBERT POLLARD, C.B.E., F.S.A.A., F.I.M.T.A.

Councillor Miss E. PORTER, J.P.

H. ROBINSON, Esq., J.P.

Councillor R. SPENCER

I. B. THORBURN, Esq., F.R.F.P.S., F.R.C.S., D.L.O.

D. W. WAUCHOB, Esq., M.B., B.Ch., B.A.O., D.P.H.

C. R. WILSON, Esq., M.B., Ch.B., D.P.H.

Group Secretary:

J. P. LEWIS, Esq., D.P.A., F.H.A., A.C.C.S.



## *Order of Proceedings*

1. Mr. E. BISHOP, O.B.E., D.M.A., Chairman of the Blackpool and Fylde Hospital Management Committee, will introduce and welcome Sir JAMES LYTHGOE, C.B.E., M.A., Chairman of the Manchester Regional Hospital Board.
2. Sir JAMES LYTHGOE, C.B.E., M.A., Chairman of the Manchester Regional Hospital Board, will speak.
3. Mr. D. K. LENNOX, F.R.C.S., member of the Hospital Management Committee, will propose a vote of thanks to Sir JAMES LYTHGOE, C.B.E., M.A.
4. Mr. C. G. MACKEITH, of Messrs. Mackeith, Dickinson and Partners, Architects, will present a memento of the occasion to Sir JAMES LYTHGOE, C.B.E., M.A.
5. The platform party, followed by the guests, will proceed to the Twin Operating Theatre Suite where Sir JAMES LYTHGOE, C.B.E., M.A., will declare the new Operating Theatre open, and proceed to unveil a commemorative plaque.
6. A dedicatory prayer will be offered by the Reverend B. G. MOORE, M.A., Chaplain to the Hospital.
7. Sir JAMES LYTHGOE, C.B.E., M.A., and the guests will inspect the new Operating Theatre.
8. The platform party, followed by the guests, will then proceed to the entrance to the new Central Sterile Supply Department where Sir JAMES LYTHGOE, C.B.E., M.A., will declare the Department open and unveil a commemorative plaque.
9. A dedicatory prayer will be offered by the Reverend B. G. MOORE, M.A., Chaplain to the Hospital.
10. Sir JAMES LYTHGOE, C.B.E., M.A., and the guests will inspect the new Central Sterile Supply Department and then proceed to the main Dining Room where Afternoon Tea will be served.

## BLACKPOOL AND FYLDE HOSPITAL MANAGEMENT COMMITTEE

### VICTORIA HOSPITAL, BLACKPOOL

Victoria Hospital, Blackpool (448 beds), is the only acute general hospital serving the Blackpool and Fylde area and is now in process of being developed under the Minister's Ten-Year Plan as a District General Hospital.

The increase in the volume of work is amply demonstrated by the following statistics:—

	1950	1964
In-patients	7,195	13,515
Average daily number of beds available	318	417
Average daily number of beds occupied	275	371
Operations performed	7,117	13,118
New Out-patient Attendances at Consultative Clinics	20,012	23,807
Total Out-patient Attendances at Consultative Clinics	51,345	78,612
Total Attendances at the Casualty Department	29,273	41,757

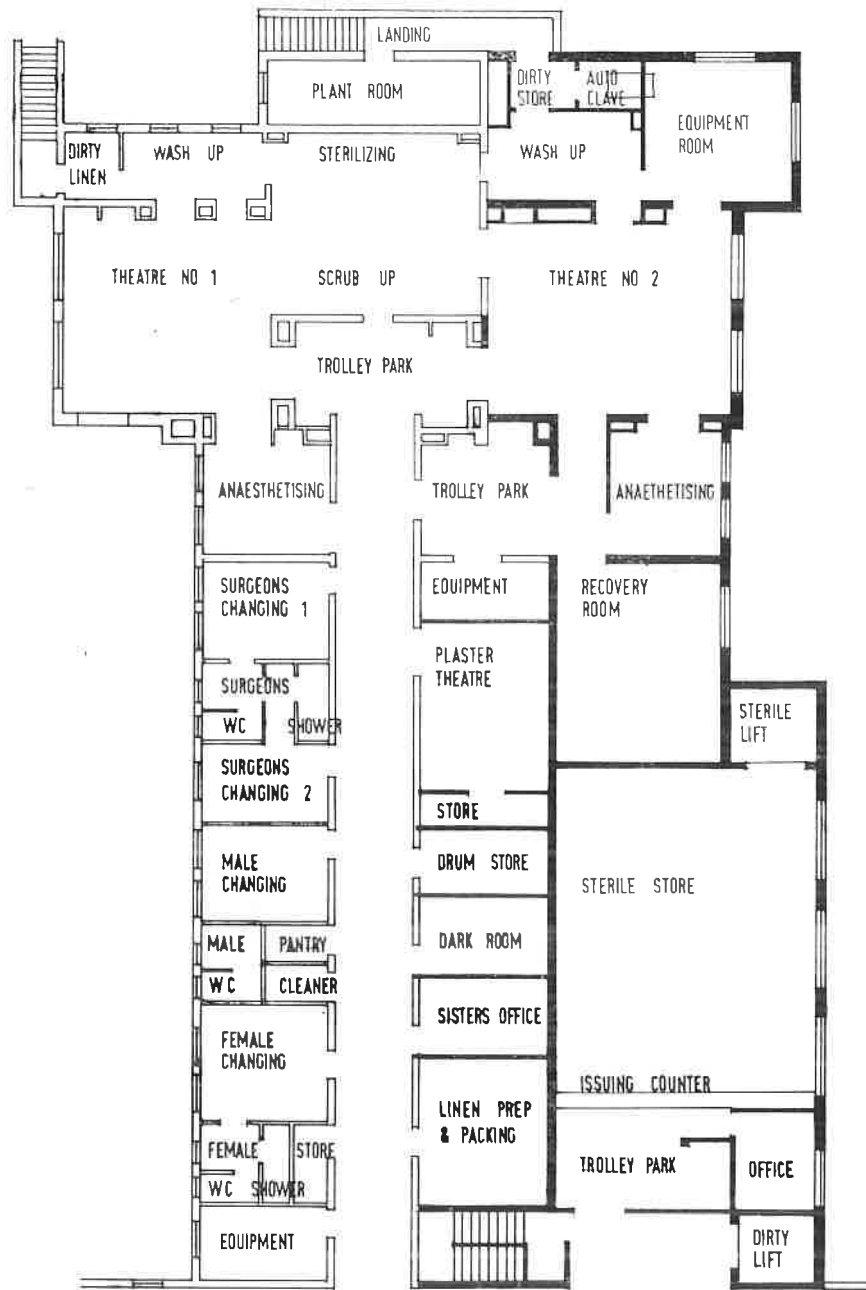
Developments at the Hospital recently completed include:—

		<i>Opened</i>
New Pathology Laboratory	£70,000	1961
Extensions to Nurses' Teaching Unit	£6,500	1962
New Radiotherapy Department	£3,265	1962
New Three-Storey Ward Block	£200,000	1963
New Dispensary	£38,000	1963
Major extensions to Boilerhouse and Engineering Services	£83,446	1963

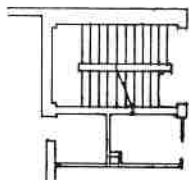
Details of further approved proposals are as follow:—

<i>Phase I</i>	<i>Work Proceeding</i>	<i>For completion in</i>
First Block of Nurses' Residential Accommodation .....	£83,547	1965
Temporary Changing Accommodation for Non-Resident Staff .....	£10,984	1965
New Out-patient, Casualty, Physiotherapy and Rehabilitation Departments .....	£447,184	1966
 <i>Phase II</i>		<i>To be commenced in</i>
New Block for Kitchen, Dining Room, Central Stores and Non-Resident Staff Changing Accommodation .....	} £338,000	1965
New Group Laundry .....		
New Boiler .....		
Water Storage Tanks .....		
Completion of Nurses' Residential Accommodation .....	} £495,000	1966
Nurse Training School .....		
Maternity Unit .....	} £1,045,000	1967
Extension and Re-siting of Hospital Switchboard .....		
Bridge Link with Main Hospital .....		
Alterations to provide Administrative Accommodation .....		
Alterations to provide Administrative Accommodation .....	£18,000	1967
 <i>Phase III</i>		
Ward Block, X-Ray Department and Group Offices .....	} <i>Cost not yet Estimated</i>	1971— 1975
Extension to Department of Pathology .....		
 <i>Phase IV</i>		
Acute Geriatric Unit (80—100 beds) .....	}	
Acute Psychiatric Unit (100—150 beds) .....		





CORRIDOR

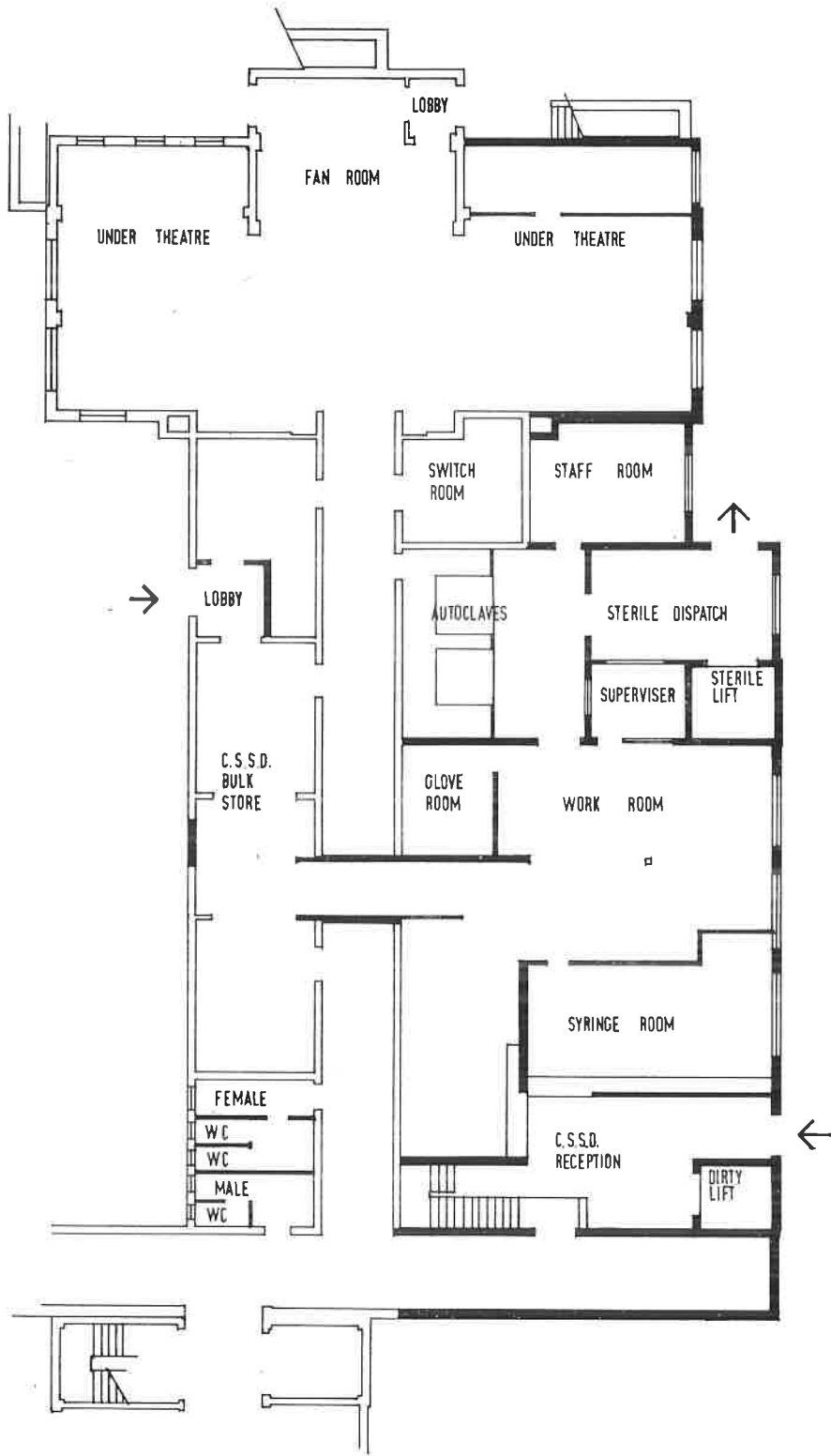


GROUND FLOOR



OPERATING THEATRE SUITE  
C.S.S.D. STERILE STORE

scale  
0 5 10 15 20 FEET



LOWER GROUND FLOOR C.S.S.D.

scale  
 0 5 10 15 20 FEET

## **NEW OPERATING THEATRE**

On the 17th July, 1958, Mr. G. H. BUCKLEY, F.R.C.S., J.P., officially opened Operating Theatre III and the brochure prepared for the occasion stated that the building was so designed as to be capable of extension to form a Twin Operating Theatre Suite.

The new Operating Theatre IV, to be officially opened on the 29th January, 1965, completes the Twin Suite and has been provided at a cost of approximately £62,320. In addition to four general operating theatres, Victoria Hospital also has Theatre V (used mainly for Eye and E.N.T. operations) and the Casualty Theatre. The existing Casualty Theatre is to be replaced by more adequate provision in the new and extended Out-patient and Casualty Departments, work on which is now proceeding.

The Twin Operating Theatre Suite will be used mainly by the Departments of General, Orthopaedic and Thoracic Surgery.

Hot water pipe coils which are embedded in the roof and linked with the main hospital boiler plant provide the heating to the Suite.

The Operating Theatre, Anaesthetising Room, Recovery Room and Sterilizing Room are mechanically ventilated by plant installed in the basement below the Suite. Fresh air is filtered and heated before being delivered into the air-conditioned rooms. The air is also humidified to prevent the risk of static discharge of electricity. There is also a cooling unit to facilitate the rapid control of temperature when required.

The Theatre Suite is fitted with a system of piped gases so that oxygen, nitrous oxide and compressed air are delivered to the Operating Theatre, Anaesthetising Room and Recovery Room. A vacuum system has also been provided with standby steam ejector equipment for use in the event of electrical supply failure.

The electrical installation is by mains supply but there is also a 35kW alternator to enable the Theatre Suite to function in the event of electrical mains supply failure.

The Suite has been provided with a room complete with a high-speed high-vacuum autoclave for the purpose of preparing assembling and sterilising specialized equipment used in Thoracic and Cardiac operations.

The Recovery Room in the Suite has been designed and equipped for patients who will require intensive care for a period of two to three days following major thoracic or cardiac operations and before returning to the ward.

The Theatre will be officially opened on the 29th January, 1965, by Sir JAMES LYTHGOE, C.B.E., M.A., Chairman of the Manchester Regional Hospital Board, who will unveil a commemorative plaque with the following wording:

VICTORIA HOSPITAL, BLACKPOOL

---

This tablet was unveiled by  
SIR JAMES LYTHGOE, C.B.E., M.A.  
Chairman of the Manchester Regional Hospital Board  
when he opened the Second Operating Theatre  
completing this Twin Operating Theatre Suite  
on the  
29th January, 1965

---

Erected during the Chairmanship of  
E. BISHOP, Esq., O.B.E.



### **CENTRAL STERILE SUPPLY DEPARTMENT**

#### **Function**

The Central Sterile Supply Department, which has been built at a cost of £70,466, is to provide a centralised service for the supply of sterilised articles for medical and nursing procedures. The provision of this centralised service will eliminate almost all sterilising procedures in hospital wards and departments thereby saving nursing time whilst contributing towards the avoidance of cross-infection.

The Department will ultimately supply sterile dressings, syringes, needles, gloves and instruments to all wards and departments not only of Victoria Hospital but also all other Hospitals and Clinics in the Group and to the Local Health Authority and general practitioner services.

#### **Staff**

The Department is under the administrative control of the Group Consultant Pathologist and Control of Infection Officer. The staffing comprises a Supervisor, an Assistant Supervisor and a number of Orderlies.

### **Accommodation and Organisation**

The Department, which is on two floors has been designed to facilitate the Reception, Dismantling, Examination, Cleaning, Drying, Packing and Sterilising procedures.

The Upper Floor, approached from the main ground floor corridor of the hospital, is the sterile store from which all issues of sterile goods will be made.

Used articles will be taken to the lower ground floor by the lift adjoining the entrance area off the main corridor. Alongside this lift on the lower ground floor is access from outside the hospital for the reception of used articles from other hospitals in the Group.

Used articles returned from the wards are sorted in the reception area. Syringes, instruments and gloves are washed, dried and re-sterilised on separate production lines. Ultra-sonic washers are used for instrument and syringe washing.

There is a bulk store for dressings, linen and other soft goods. These are made up in separate packs, each sufficient for one dressing or other surgical procedure



only, double wrapped and sterilised in the high vacuum, high pressure steam sterilisers. After sterilising, the packs are transferred by the second lift to the sterile store on the upper floor.

### **Sterilising Equipment**

The Department is equipped with two Drayton Castle "Powerclaves" in which will be sterilised all dressings and gloves, linen and other soft goods and also certain types of instruments. These "Powerclaves" are fully automatic, high vacuum, high pressure steam sterilisers with push button control and the temperature of every sterilising cycle is automatically recorded on a graph as a check on the efficient operation of the equipment to ensure that all goods are processed correctly.

An Infra-Red steriliser is provided for sterilising syringes, needles and selected small instruments on a moving belt.

The Central Sterile Supply Department will be officially opened on the 29th January, 1965, by Sir JAMES LYTHGOE, C.B.E., M.A., Chairman of the Manchester Regional Hospital Board, who will unveil a commemorative plaque with the following wording:

VICTORIA HOSPITAL, BLACKPOOL

This tablet was unveiled by  
SIR JAMES LYTHGOE, C.B.E., M.A.  
Chairman of the Manchester Regional Hospital Board  
when he opened this  
Central Sterile Supply Department  
on the  
29th January, 1965

E. BISHOP, O.B.E.  
Chairman.

J. P. LEWIS,  
Group Secretary.





**VICTORIA HOSPITAL, BLACKPOOL**

**NEW OPERATING THEATRE AND CENTRAL STERILE SUPPLY  
DEPARTMENT**

- Private Architects :** Messrs. MACKEITH, DICKINSON & PARTNERS,  
4 South King Street, Blackpool.
- In collaboration with :** H. McMASTER, Esq., A.R.I.B.A.,  
Regional Architect,  
Manchester Regional Hospital Board.
- Consulting Engineers :** Messrs. R. W. GREGORY & PARTNERS,  
1 Brazénose Street, Manchester, 2.
- In collaboration with :** C. G. DAINES, Esq., A.M.I.Mech.E.,  
A.M.I.H.V.E., Regional Engineer,  
Manchester Regional Hospital Board.
- Quantity Surveyors :** Messrs. D. S. LESLIE & PARTNERS,  
23 South King Street, Blackpool.
- General Contractors :** Messrs. F. PARKINSON LIMITED,  
Mowbray Drive, Blackpool.
- Clerk of Works :** S. BILLINGTON, Esq.



