

BioDigital Human

Overview

Rani Southern-Darbar



Wolters Kluwer





Mission: To make health and the human body understandable to all people.

Background: With over 20 years of experience using 3D technology to explain complex medicine, BioDigital's founders began their careers in Biomedical Engineering, 3D Medical Animation, Health Informatics and Anatomy. Founded in 2002, BioDigital spent a decade helping customers in healthcare visualize their health information before building the BioDigital Human in 2012.

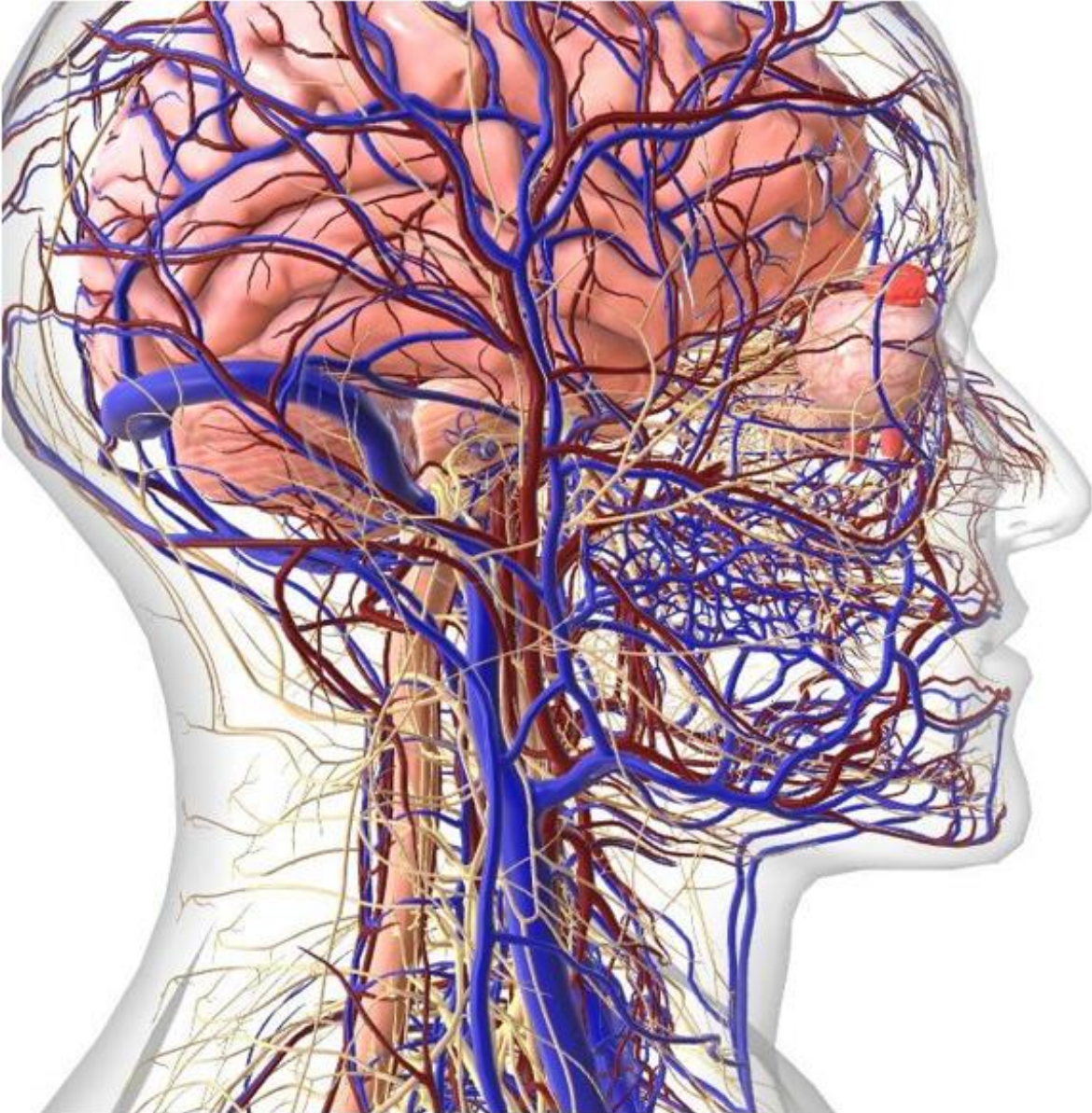
The BioDigital Human is a comprehensive virtual model of the human body, including anatomy, physiology, conditions, and treatments. The platform empowers users to create immersive experiences in any web or mobile application using interactive, 3D technology to visualize the inner workings of the human body.

BioDigital



The BioDigital Human platform is a medically accurate, virtual map of the human body—composed of 8,000+ individually selectable anatomical structures, 600+ simulated health conditions and treatments, and a powerful toolkit to map, visualize and share 3D models.

This fully embeddable, cloud-based software is available in eight languages, on any phone, laptop, computer or in AR/VR for use within any educational or clinical workflow.



Why BioDigital?

Level up faculty resources with access to 3D models that can be customized to meet learning objectives and create interactive assessments.

Improve student learning outcomes through active learning with interactive 3D that provides an ideal self-study experience, allowing students to peel away layers, rotate models, zoom, fade, and test their knowledge with 3D quizzes.

Enhance course materials by embedding innovative experiences you create with Human Studio, our suite of authoring tools, within your learning management systems, e-learning materials, online courses, and more.

BioDigital

How it works:

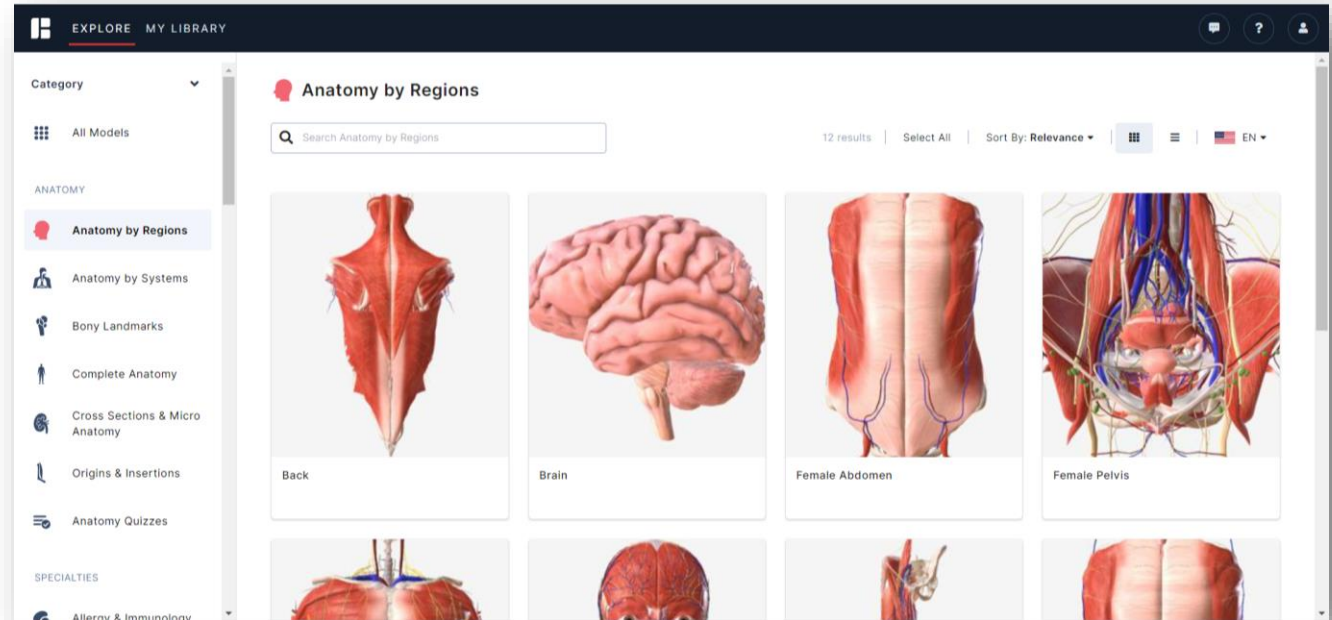
- Interact with 3D models, including 700+ 3D anatomy, disease and treatment models
- Use pre-built models, customize them, or create quizzes
- Save models to your library and organize them into collections
- Use the content within the web or mobile apps or add directly to your online materials
- Engage your students and improve learning outcomes with interactive 3D



BioDigital Human

Includes:

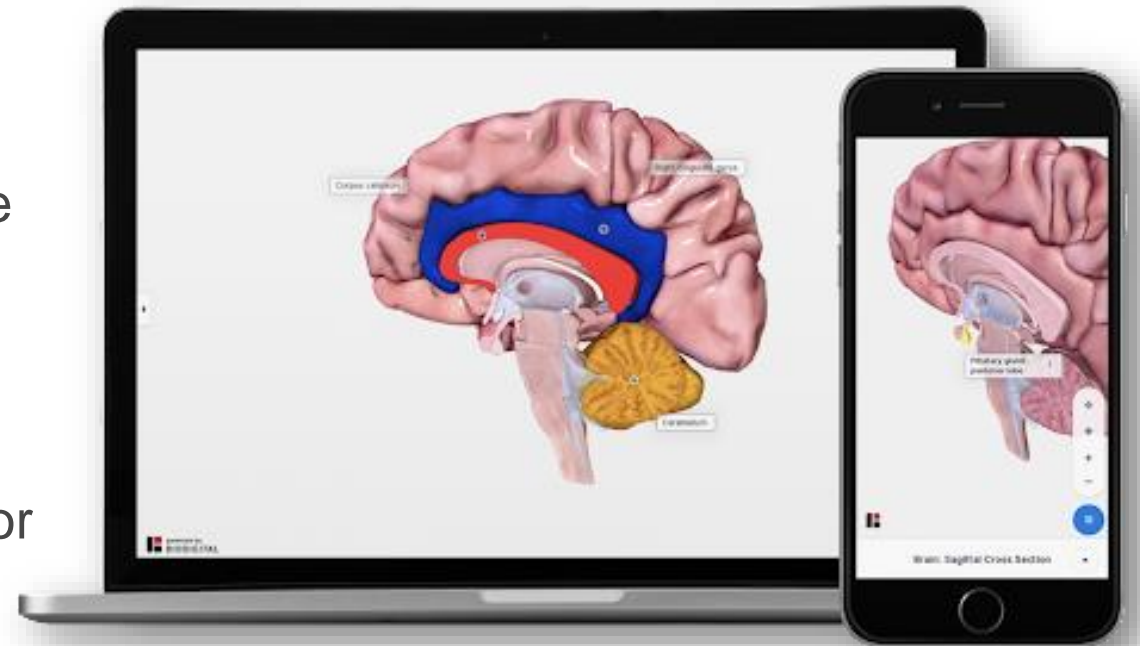
- Complete 3D male and female anatomy models
- 600+ 3D condition, disease and treatment models
- Easy LMS integration to support faculty and course learning objectives
- 640+ 3D quiz questions
- An authoring tool that allows users to adapt, create, animate and publish 3D models



BioDigital Human

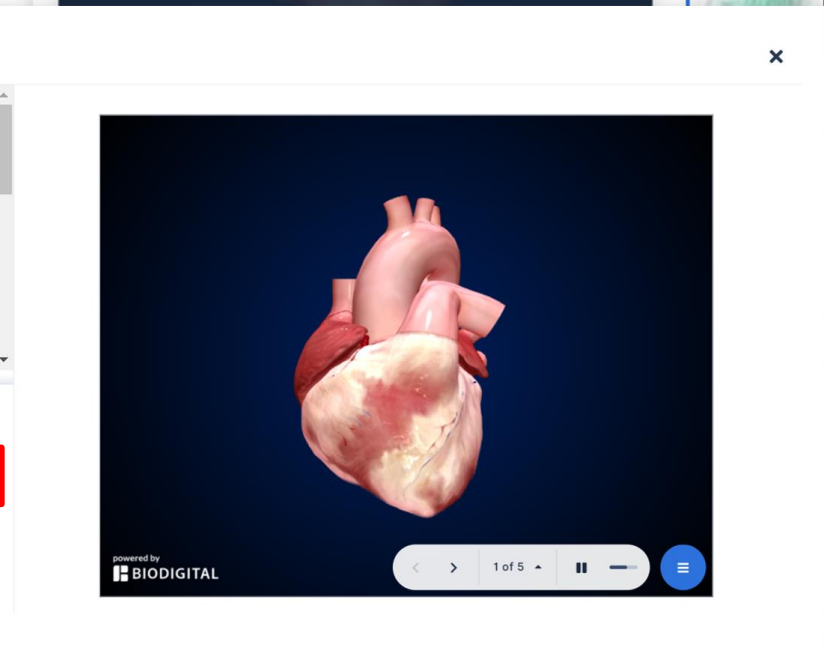
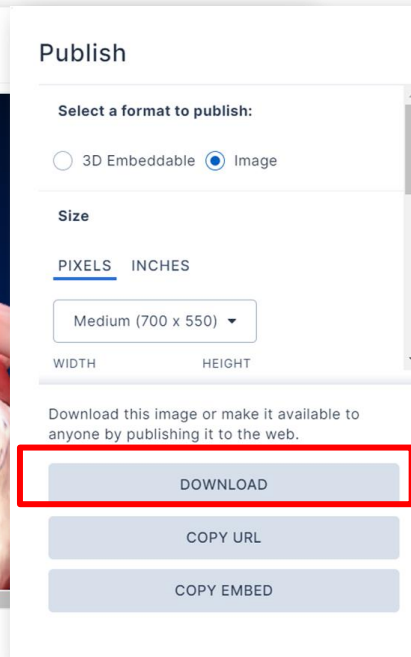
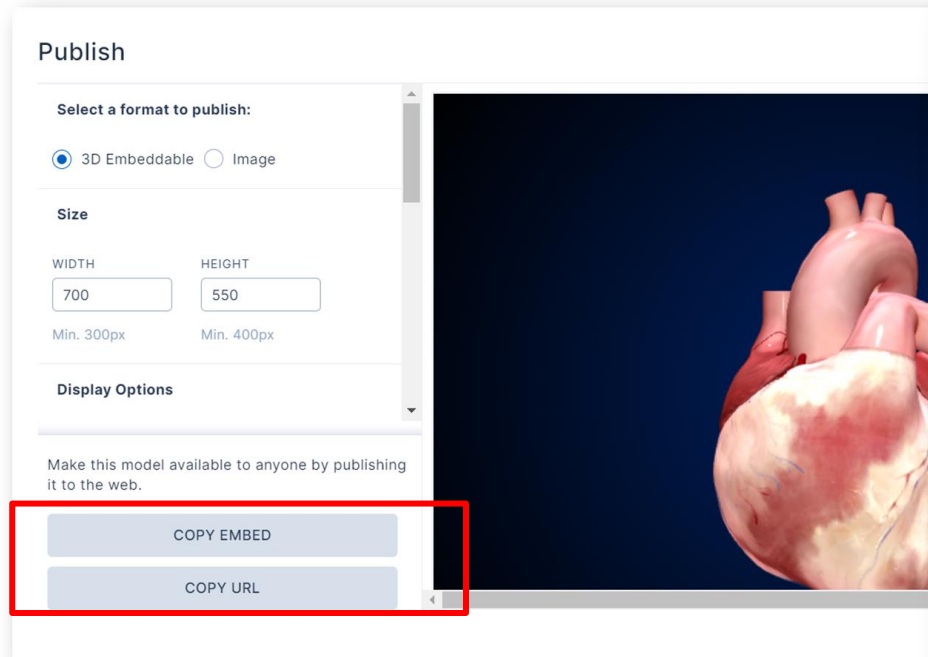
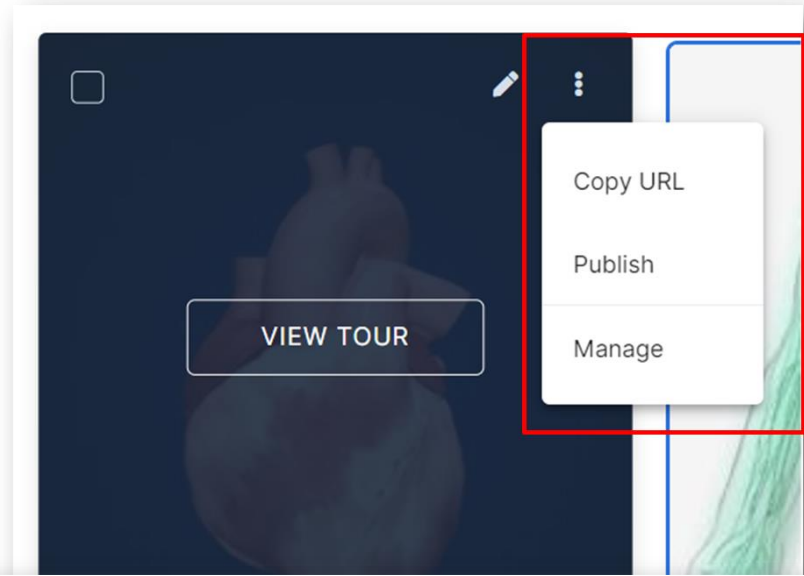
How it works:

- Explore our library of hundreds of 3D models
- Use pre-built models, customize them, or create quizzes
- Save models to your library and organize them into collections
- Use the content within the web or mobile apps or add directly to your online materials
- Engage your students with interactive 3D content



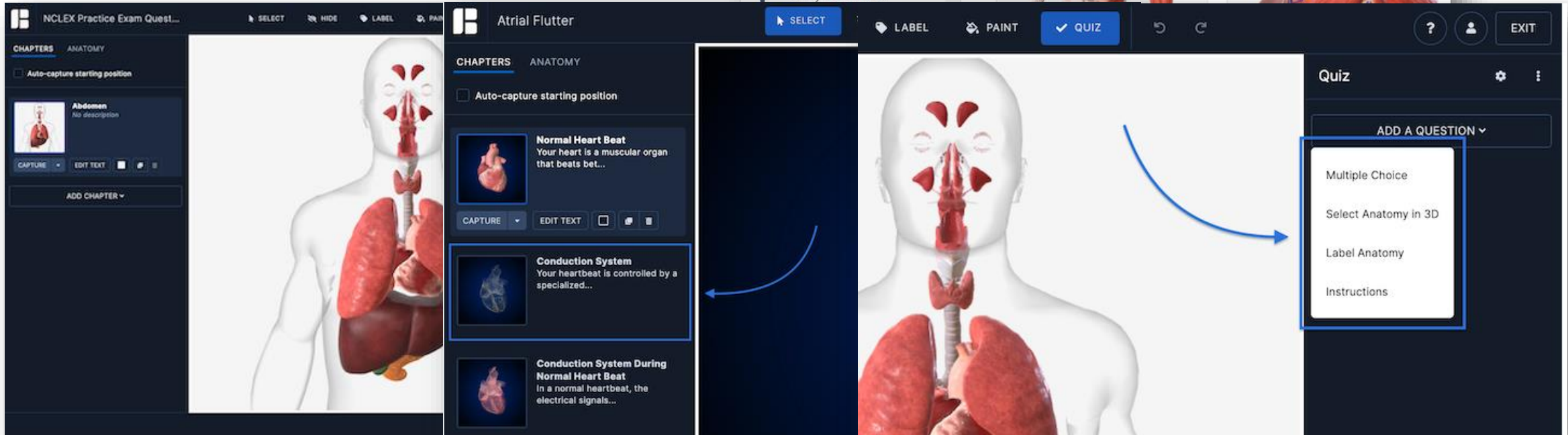
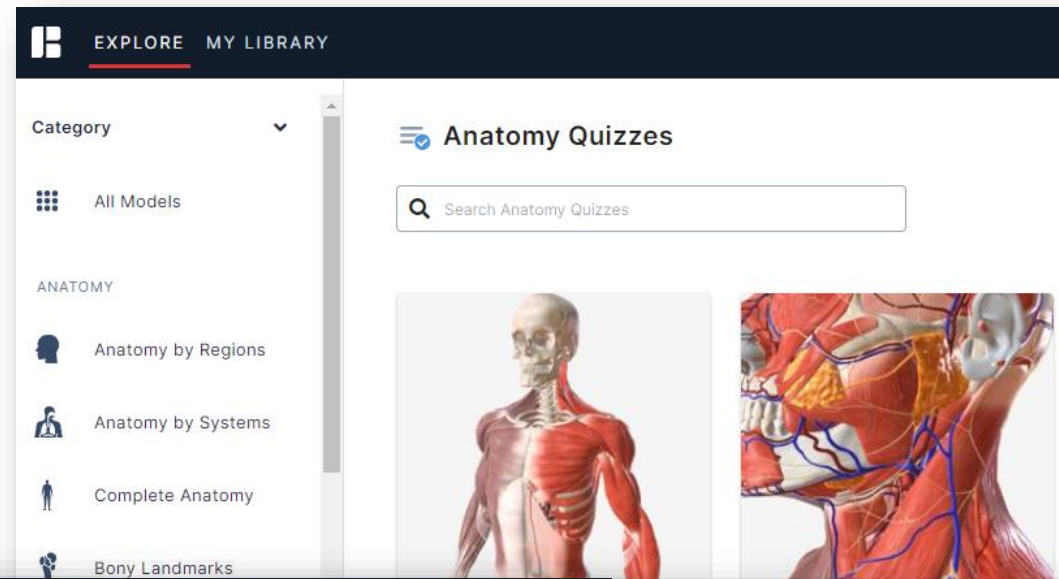
LMS-Course Integration Made Easy!

- Publish in your LMS
- Copy URL for direct access
- PowerPoint presentations



Anatomy Quizzing

- Self Assessments for students
- 3D Custom Quizzes for Faculty



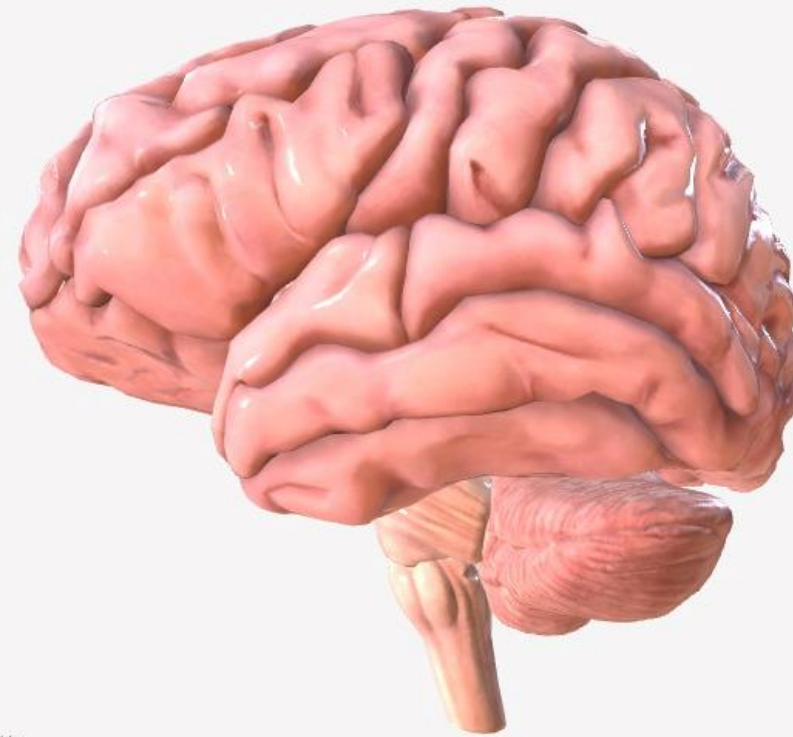
Explore the Homepage & General Navigation

The screenshot shows a dark-themed website homepage. At the top left, there is a hamburger menu icon, followed by two buttons labeled "EXPLORE" and "MY LIBRARY". At the top right, there are three circular icons: a chat bubble, a question mark, and a user profile. The main content area features the text "A Better Way to Understand Health and the Human Body" in white. Below this text is a search bar containing the word "black" and a magnifying glass icon. Red rectangular boxes highlight the navigation elements: the menu and buttons on the top left, the icons on the top right, and the search bar.

Demo!

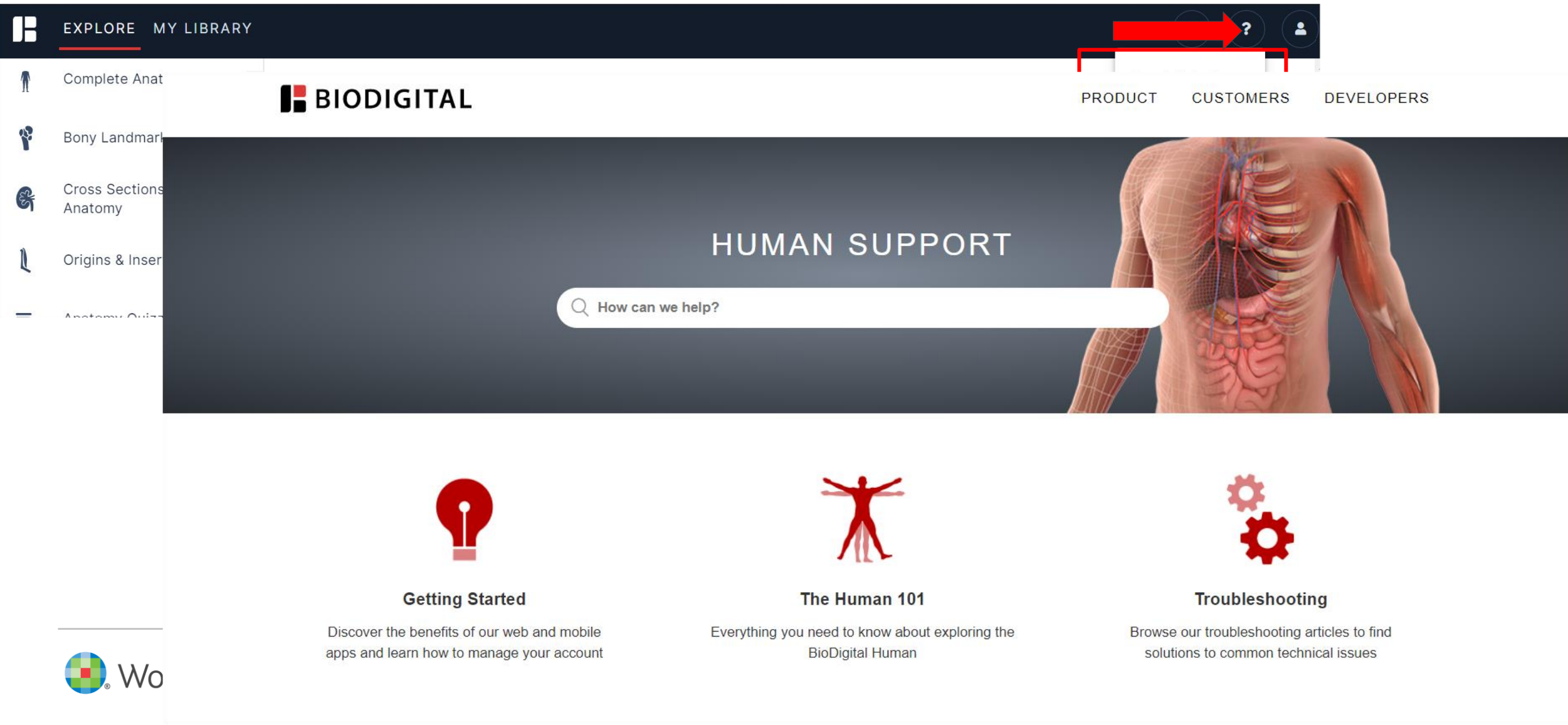


<https://human.biodigital.com/login/create?code=WKSDRB6B>



powered by
BIODIGITAL

Access the BioDigital Help Center



The screenshot shows the BioDigital website interface. At the top, there is a dark navigation bar with 'EXPLORE' and 'MY LIBRARY' on the left, and a search icon, a question mark icon, and a user profile icon on the right. A red arrow points to the question mark icon. Below the navigation bar, the 'BIODIGITAL' logo is on the left, and 'PRODUCT', 'CUSTOMERS', and 'DEVELOPERS' are on the right. The main content area features a large banner with the text 'HUMAN SUPPORT' and a search bar containing the text 'How can we help?'. Below the banner, there are three columns of content, each with a red icon and a title: 'Getting Started' (lightbulb icon), 'The Human 101' (human figure icon), and 'Troubleshooting' (gears icon). Each column has a short paragraph of text below the title. In the bottom left corner, there is a logo for 'Wo' with a colorful grid icon.

EXPLORE MY LIBRARY

BIODIGITAL

PRODUCT CUSTOMERS DEVELOPERS

HUMAN SUPPORT

How can we help?

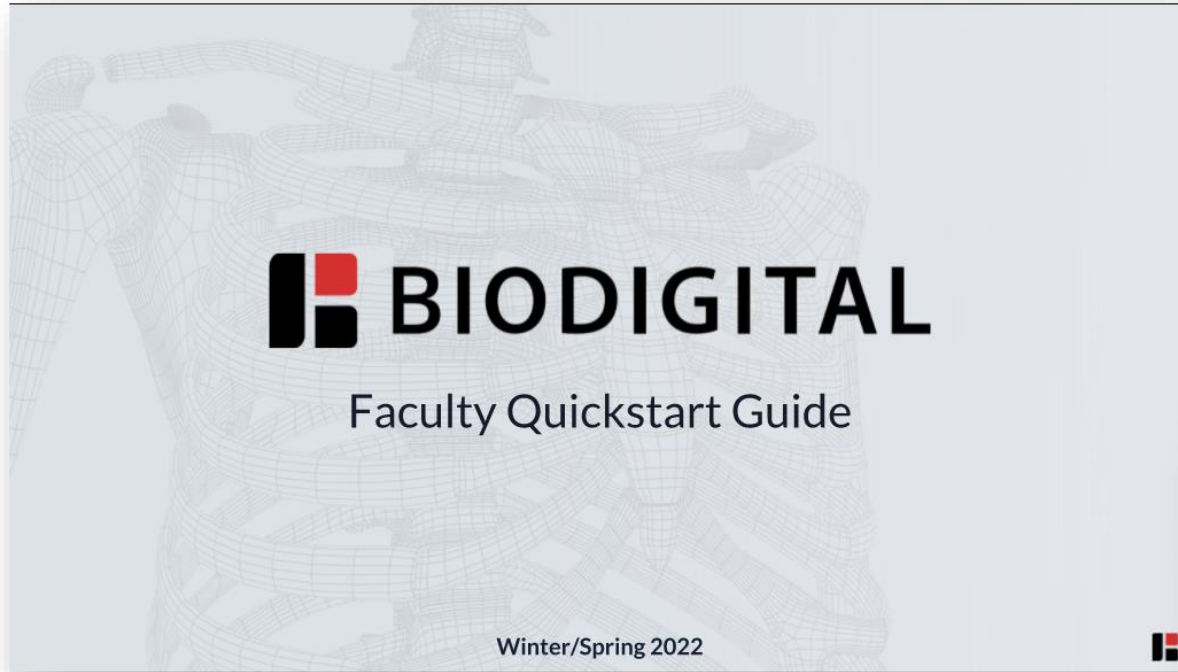
Getting Started
Discover the benefits of our web and mobile apps and learn how to manage your account

The Human 101
Everything you need to know about exploring the BioDigital Human

Troubleshooting
Browse our troubleshooting articles to find solutions to common technical issues

Wo

QuickStart Guides



Click the images to access the Guides

